

# CTS-8800<sup>Plus</sup>

Digital Ultrasound Imaging System

- Versatile 4D Imaging
- Biplane Imaging with Multi-angle Biopsy
- Pulse Wave Doppler Upgradeability
- Comprehensive Clinical Application



**SIUI**

Shantou Institute of Ultrasonic Instruments Co., Ltd.

Add: #77, Jinsha Road, Shantou 515041, Guangdong, China

Tel: +86-754-88250150 Fax: +86-754-88251499

E-mail: [siui@siui.com](mailto:siui@siui.com) Website: <http://www.siui.com>



Specifications and appearance are subject to change without prior notice.  
DCY2.782.EN.CTS-8800Plus.CY/6A01

**SIUI**

# CTS-8800<sup>Plus</sup>

## Your Powerful and Versatile Diagnostic Ultrasound Imaging Solution

Introducing the new generation diagnostic ultrasound platform, CTS-8800Plus. combines the advanced technology with user-centric design philosophy and functionalities. It provides you a complete diagnostic ultrasound tool to answer your daily clinical practice demands.

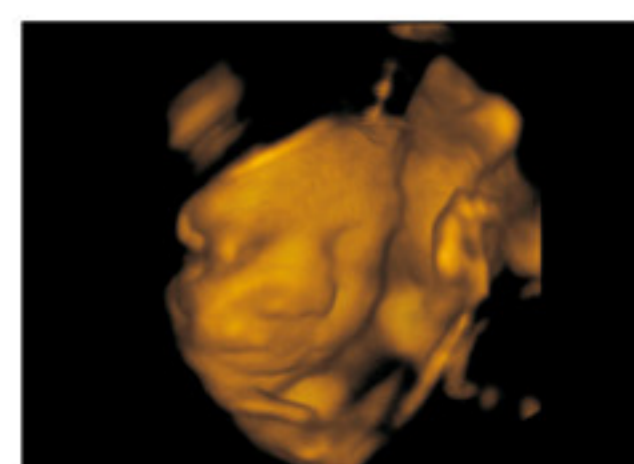
## Wide Range of Application

Powered by the rich functionalities and extraordinary imaging performance, the CTS-8800 PLUS is your best choice for applications like abdomen, vascular, breast, OB/GYN, musculoskeletal, urology, pediatrics, small parts. CTS-8800 PLUS provides each application with the complete and professional CALS/MEAS software to satisfy the real scenario diagnosis needs.



## Versatile 4D Capability

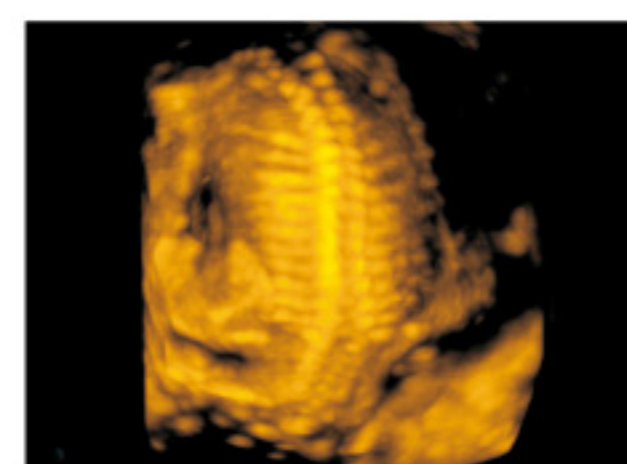
The CTS-8800Plus offers excellent 4D imaging at reasonable price. Volume 4D imaging technology of CTS-8800 Plus covers obstetrics 4D fetus imaging, gynecology trans-vaginal 4D imaging, small organ microconvex 4D imaging, all of which show more accurate and specific volume imaging for different clinical diagnostic demand.



Face



Hand



Spine

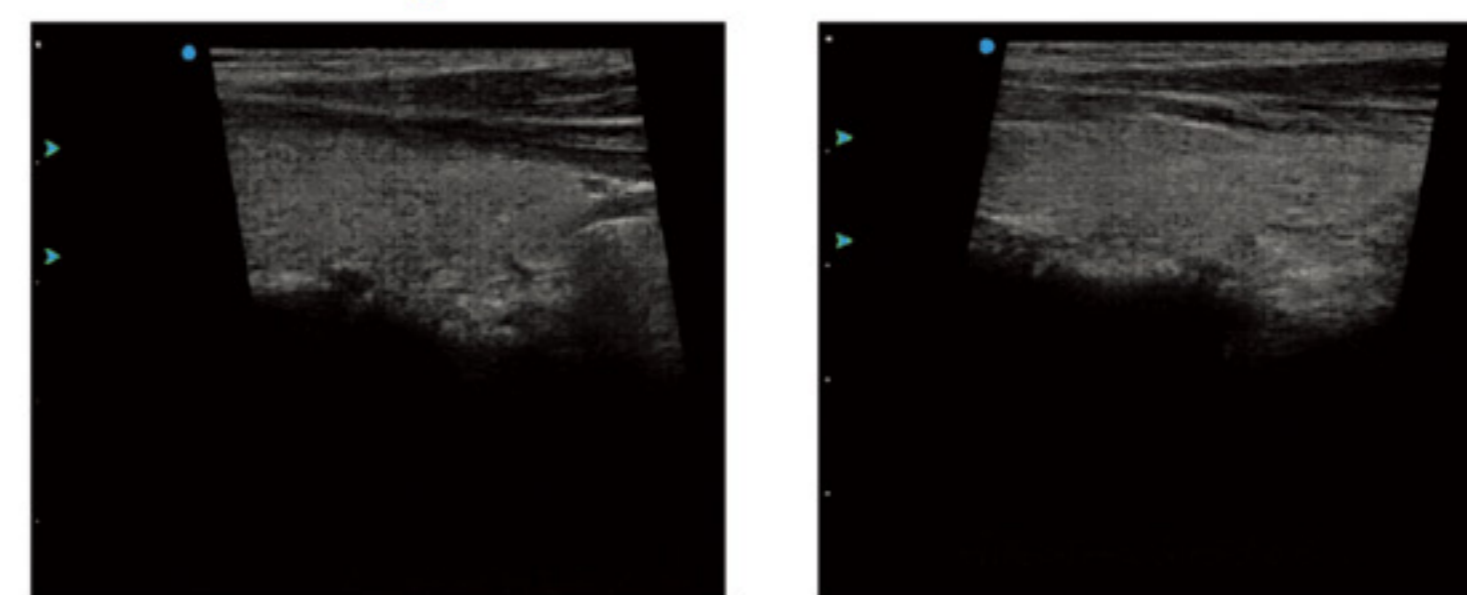


Face

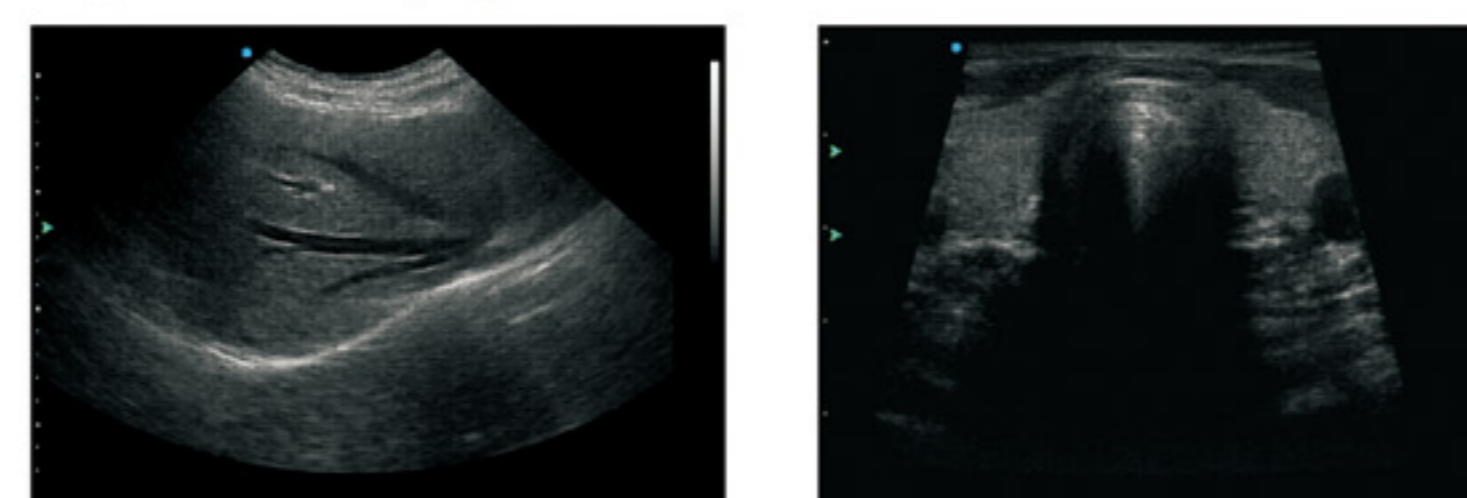
## Advanced Imaging Technology

CTS-8800 Plus provides imaging technologies such as Speckle Reduction Technology, Compound Imaging, Trapezoidal Imaging & B Mode Steering, increasing user's diagnostic confidence and analysis accuracy.

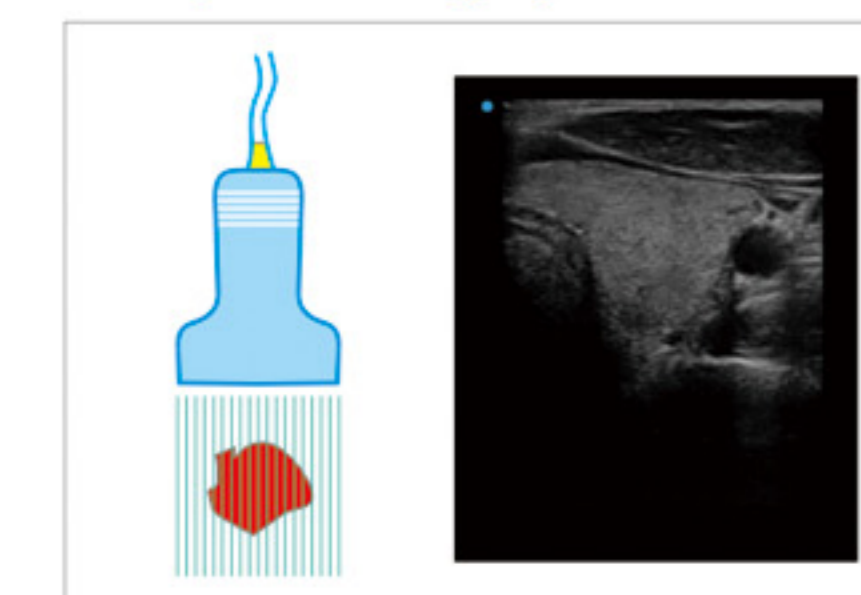
### B Mode Steering



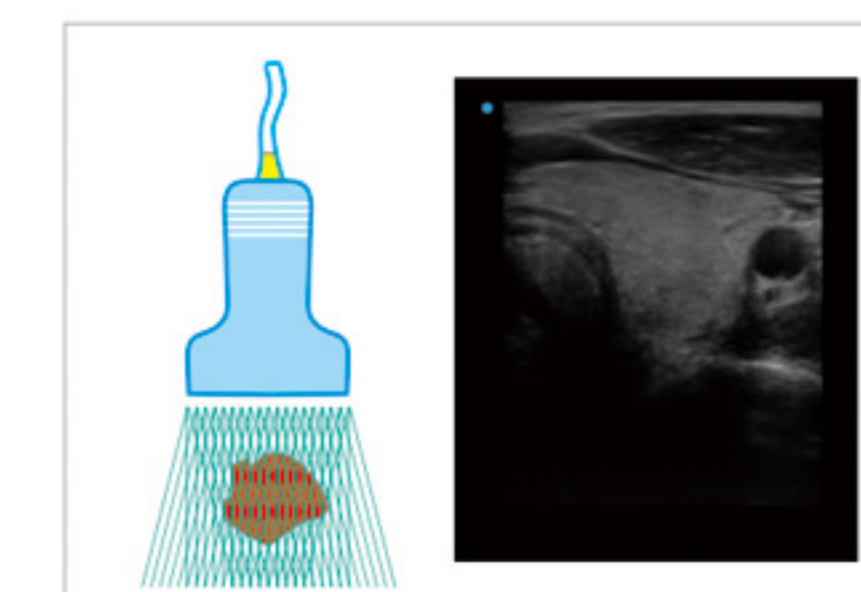
### Trapezoidal Imaging



### Compound Imaging



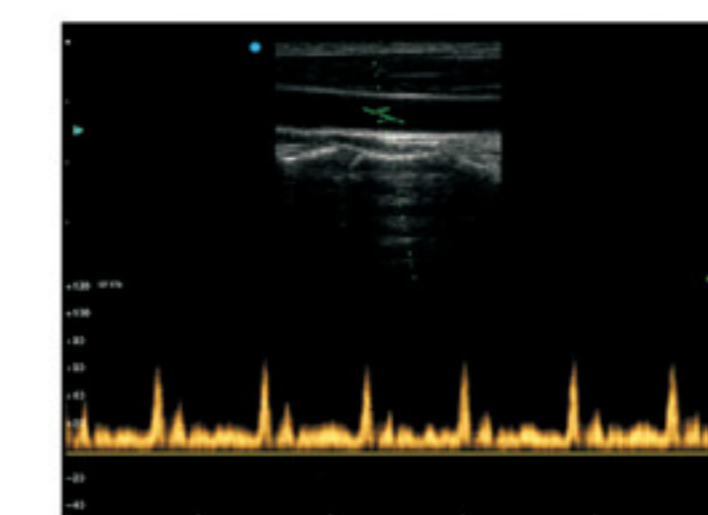
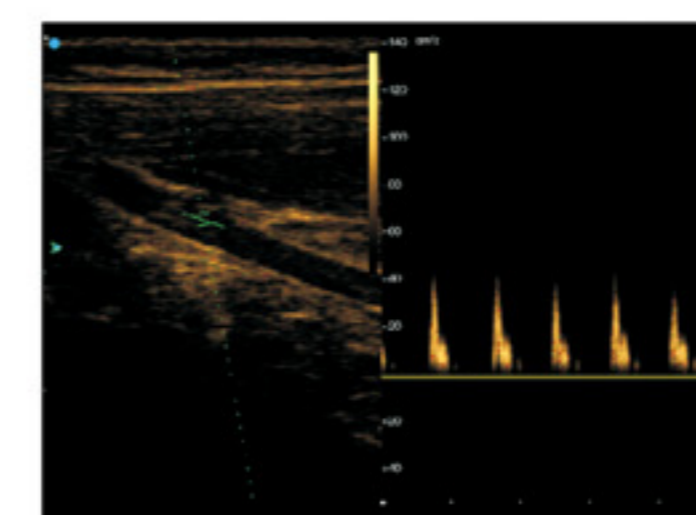
Before



After

## PWD Upgradeability (Option)

- Available for vascular and cardiology quantitative analysis
- Enhanced spectrum sensitivity, automatic spectrum envelope and B / PWD resizable layout



## Ergonomic Design

- More compact, more ergonomic design considerations, less weight---only 8 kg
- Attachable probe holder, robust system housing, backlit keyboard, ultra wide field of view LCD
- A friendly, convenient and comfortable experience when operating